



## Product features:

- Metal construction throughout
- Custom designed for lower range pressures
- Thermostatic valve for safety & comfort
- Freshly designed contemporary blend
- Supplied with adjustable centre inlets

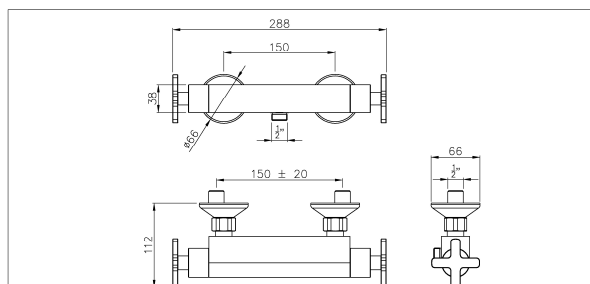
## Packaged properties:

Box length (mm): 380      Box depth(mm): 75  
Box width(mm): 175      Boxed weight (Kg): 2.5

Includes pop up waste?: No

Additional comments:

## Product dimensions:



Euphoria  
low pressure exposed thermostatic shower mixer

AB2106 v2

abode

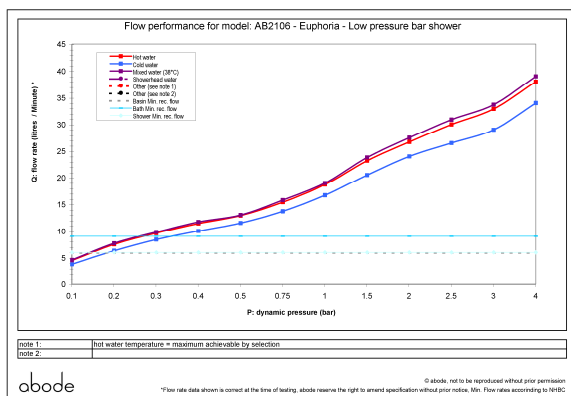
(c) abode home products ltd  
www.abode.eu  
our office is to continuously  
improve and develop products,  
and accordingly we reserve the  
right to amend specifications  
without prior notice

- Product mounted where: Wall
- Recommended hole size:
- Overall Height / projection: 112 mm
- Exit reach: 66 mm
- Exit height:
- Base size: 150 ± 20 mm

• Inlet centre distance(s):

- Min. fitting depth required: 60 mm
- Max. surface depth:

## Product flow characteristics:



- Min / Max water pressure (bar): 0.20\* / 5.00
- Part G max. mixed flow rate at 3 bar (l/m): 33.7
- Inlet connection type / length: Eccentric / 50 mm
- Inlet (plumbing connection) / outlet size: 1/2" M /
- Product flow characteristics:  
Non return valve(s) supplied or position: h&c inlet
- Aerator type:
- Control valve type: Thermostatic ( )
- Includes output diverter?: No
- Inlet meshed particle filters included: 0.60 mm
- Shower hose type / length:

## Warranty Summary (full details available on request):

- Materials and workmanship defects warranted for 5 years
- Valves and working parts warranted for 5 years
- Surface warranty defects warranted for 1 year
- O-rings, hoses & gaskets warranted for 1 year

## Care instructions:

- Clean the mixers and showers regularly as required, using soap, do not use any other cleaners.
- Regular cleaning will prevent the build up of lime scale and dirt
- After cleaning rinse thoroughly with clean water to remove any cleaner residue
- Residues of liquid soaps, shampoos and shower foams can also cause damage, so rinse with clean water after using, avoid contact with any abrasives